

Twickenham & Richmond TRIBUNE

Contents

- TickerTape
- COVID-19
- Pam Barton a champion lady golfer
- Letters
- River Crane Sanctuary
- Twickenham shop loses licence
- Hampton North Ward News
- Teddington Tidbits
- Bienvenue à Richmond
- Twickers Foodie
- Review
- Traveller's Tales
- WIZTales - Gabon & Togo
- Remember! The Somme
- WIZTales - Hong Kong

Contributors

- Simon Fowler
- Metropolitan Police
- Sammi Macqueen
- Councillor Geoffrey Samuel
- Richmond in Europe Association
- Alison Jee
- Mark Aspen
- Doug Goodman
- World InfoZone
- St Mary's University
- Brentford FC
- RFU
- NAO
- WHO
- LBRuT

Editors

Berkley Driscoll
Teresa Read



1st July 2022

T&RT

TickerTape - News in Brief

St Margarets Fair - Saturday 2nd July 11:30 - 18:00

Pop down to Moormead Park and enjoy a day of live music, stall and more. Details [HERE](#)

The Builders Arms, Teddington closes

Teddington residents were sorry to hear of the closure of popular pub The Builders Arms. Its future is not known, although there are rumours of a community campaign to save the pub.

Lovers Lights Studio, Twickenham closing

The Lovers Lights Studio (makers of handmade recycled glass chandelier lamp shades, floor and table lamps) is closing due to the sale and redevelopment of its studio near Twickenham Green. Everything, including equipment, will be put up for sale over the next few months. Find contact details [HERE](#)

London Overground

Sunday 3rd July

No service between Richmond and Camden Road until 11:00
Use alternative Tube services or the rail replacement bus service.

Support your local high street this Independents' Day Weekend

This weekend is Independents' Day UK Weekend and Richmond Council is encouraging residents to continue to support independent businesses across Richmond upon Thames by visiting their local high streets or buying local online.

Independents' Day Weekend is a UK-wide campaign that supports and promotes independent retail businesses with an annual focus around 4 July: this year Saturday 2 and Sunday 3 July are 'Independents' Day'.

The new Arts Richmond 'What's On' newsletter is out now

The July and August 'What's On' newsletter is now available, full of news, events and fun things to see and do in and around the borough over the summer months.

Read this month's newsletter [HERE](#)



skyelectrical

Replacing your halogen recessed lights with LEDs will:

- ✓ SAVE ENERGY
- ✓ SAVE YOU MONEY
- ✓ PROVIDE BETTER LIGHTING

So...

- ✓ CALL US TODAY FOR A FREE HOME ASSESSMENT AND QUOTE

For a timed appointment please call Sky Electrical on 020 8894 1799
22 Fifth Cross Road, Twickenham, Middlesex, TW2 5LF
www.skyelectrical.co.uk

020 8894 1799
info@skyelectrical.co.uk

COVID-19

Teresa Read

World Health Organization Epidemiological update on COVID-19

Global overview - Data as of 26 June 2022

Globally, the number of weekly cases has increased for the third consecutive week, after a declining trend since the last peak in March 2022. During the week of 20 to 26 June 2022, over 4.1 million new cases were reported, an 18% increase as compared to the previous week. The number of new weekly deaths remained similar to that of the previous week, with over 8,500 fatalities reported.

At the regional level, the number of new weekly cases increased in the Eastern Mediterranean Region (+47%), the European Region (+33%), the South-East Asia Region (+32%), and the Region of the Americas (+14%), while it decreased in the African Region (-39%) and the Western Pacific Region (-3%). The number of new weekly deaths increased in the Eastern Mediterranean Region (+22%), the South-East Asia Region (+15%), and the Region of the Americas (+11%), while decreases were observed in the Western Pacific Region (-6%), the European Region (-5%) and the African Region (-1%).

As of 26 June 2022, over 541 million confirmed cases and over 6.3 million deaths have been reported globally.

At the country level, the highest numbers of new weekly cases were reported from the United States of America (701,855 new cases; +5%), Germany (504,655 new cases; +23%), Brazil (349,791 new cases; +37%), Italy (340,012 new cases; +61%), and China (333,926 new cases; -18%).

The highest numbers of new weekly deaths were reported from the United States of America (1,997 new deaths; -2%), Brazil (1,313 new deaths; +37%), China (925 new deaths; -11%), the Russian Federation (429 new deaths; -3%), and Italy (355 new deaths; +5%).

IN THE NEWS

The Guardian, 1 July 2022: UK Covid levels rise 30% in a week to estimated 2.3m cases

yahoo sport, 1 July 2022: Covid infections continue rise as Scotland hits highest estimates since April

Reuters, 30 June 2022: Japan's capital to raise coronavirus infections level alert level to 2nd highest

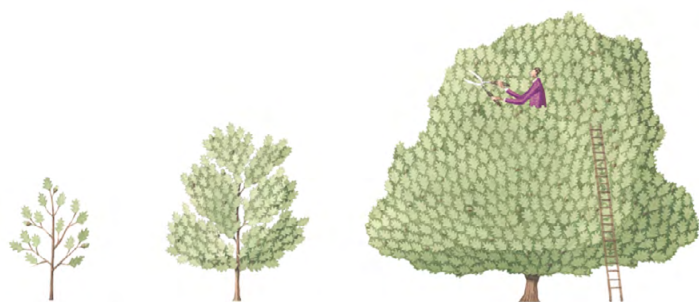
nature, 28 June 2022: COVID was twice as deadly in poorer countries:

Study looking at death rates early in the pandemic confirms that low-income nations have borne the brunt of the global disaster

INDEPENDENT, 28 June 2022: Hospital admissions continue to rise as experts warn of fifth wave

Reuters, 28 June 2022: China slashes Covid quarantine time for international travellers

inews, 27 June 2022: Covid cases rise to 270,000 a day in the UK, but experts think we may be reaching peak of latest Omicron wave



The Tree Agency

darryl parkin

The Treehouse
25 King Edwards Grove
Teddington, Middlesex TW11 9LY
Telephone 020 8274 0107
Mobile 07960 123580
Fax 020 8274 0119
info@thetreeagency.co.uk
www.thetreeagency.co.uk

The Tree Agency



Pam Barton a champion lady golfer

By Simon Fowler

The Royal Mid-Surrey Golf Club, who play in the Old Deer Park, Richmond, has two courses for members. One of which is called the 'Pam Barton'. But who was Pam Barton and why does she deserve this honour?

Pamela Espeut Barton was born in March 1917 and grew up in Barnes, the daughter of Henry Charles Johnston Barton, a prosperous tea dealer, and Ethel Maude Barton. Family and friends remember that she was a modest and unassuming young woman, with memorable auburn hair, a cheeky grin, and with her left foot firmly planted, she attacked the ball whole heartedly. Indeed, Miss Barton first came to public attention in 1931, aged 14, in the Girls' Open Championship, for hitting the ball further than anyone else. This skill perhaps was the result of coaching from J H Taylor, the professional at the Royal Mid-Surrey, who concentrated only on getting her to hit the ball as hard as possible. Fortunately other coaches had more imaginative ideas.

Aged 17, she won the French Ladies' Championship. 1937 perhaps saw her at the peak of her powers winning both the British Ladies Amateur Championship and the American Women's Amateur event. Her victory in New Jersey was the first by a foreign competitor for two decades and the first time in nearly three that a player held both titles simultaneously. A commentator wrote that Miss Barton's 'greatest asset is her attitude of mind, she has wonderful powers of concentration and wonderful fighting qualities coming up the home stretch where it matters most.'



In Richmond, Miss Barton had been made an honorary life member of the Royal Mid-Surrey, and perhaps more significant she was the only lady member permitted to play the Men's course.

On the outbreak of the Second World War Pam Barton immediately signed up as an ambulance driver. In early 1941 she joined the Women's Auxiliary Air Force (WAAF) where she served as a Flight Officer in command of more than 600 women at RAF Manston in Kent.

Tragically on 13 November 1943, 26-year-old Barton was killed in an accident at nearby RAF Detling when a de Havilland Tiger Moth in which she was a passenger hit a fuel bowser on take-off in bad weather. She was buried with military honours at Margate Cemetery.

Her fiancée was Flight Lieutenant Angus Ruffhead, the plane's pilot. He survived the crash but was killed in action over France a few weeks later.

We'll never know of course, but many commentators think that Pam had yet to reach the peak of her golfing powers.

In her honour, the 'Pam Barton Memorial Salver' is awarded to the winner of the British Ladies Amateur Golf Championship.

Dear Editors,

Sauce for the goose ?

Only 7 miles away from Twickenham is another patch of open land being redeveloped by both Merton and Wandsworth Councils against the wishes of the local residents. The similarities with Twickenham are striking.

In both cases we are talking about land that is designated Open Space that also includes some Metropolitan Open Land; one is within a Conservation Area, the other adjacent to it. Both planning applications have strongly worded objections from the CPRE (Council for the Protection of Rural England), and I would suggest you look at the objection they submitted on 23rd September 2021 to the Twickenham development planning portal. It makes sobering reading.

Both planning applications are claimed to be vital to the future success of their towns. Both have buildings that are too high, and neither building improves the vista but are eyesores. Both have mature trees being removed. Some of these will be transplanted, carrying a mortality rate of around 50%.

The All England Lawn Tennis Association (AELTA) is planning to build on land it bought from Merton Council in 1992, which has a restrictive covenant held by the Council on behalf of the public. This covenant means that the land cannot be used except for leisure or recreational purposes, or as an open space, and there must not be buildings on it.

The Twickenham Riverside Trust, which has the added dimension of being a Charity, has a lease from Richmond Council, which contains a covenant that the specified land (the Diamond Jubilee Gardens) should remain Public Open Space until 2139 (see *Tribune* [edition 294](#)).

The Liberal Democrats, who run Richmond Council, are planning to break this covenant if they go ahead with their current plans for Twickenham Riverside. Merton Council will also have to break their covenant if they give planning permission to AELTA.

It is very interesting to compare what the LibDem Councillors on Merton Council have to say about their covenant. "From a legal perspective they (the AELTA) never bought the right to build on the land, and now they're trying to do just that. Our stance is that the council is a public authority holding the benefit of the covenant in trust for the community. And if the Council doesn't enforce the covenant we will go to court to enforce it.

Funny that, isn't it! What a difference 7 miles makes if you are a LibDem Councillor!

The multiple local objectors say in Wimbledon "*if the Council really does want to be an active contributor to the local community and have a positive impact it must go back to the drawing board, scale back these proposals and put forward a better plan which will respond positively to the protected landscape and comply with the covenant, so as to enable Wimbledon to continue to thrive, with the community sharing and enjoying genuine benefits which can be delivered as a result.*"

Don't you agree that this could just as easily be said about Twickenham?

Sue Hamilton-Miller
Twickenham

Dear Editor,

Why do only 52 residents out of 1055 households support the proposed CPZ Zone T2 by the station?

As you can see from the [attached](#) round 2 analysis, something strange has happened with the normal voting pattern. Out of the 1055 households in the proposed Zone T2, only 52 households voted in favour of the new CPZ Zone T2 (all living in current Zone T on the west side of the station), a further 158 households living in the same Zone T area did not vote at all - most if not all, will have current Zone T parking permits. Very strange indeed, is that only 3 of Councillor Elengorn's neighbours in Albert Road voted YES, and 22 did not vote at all.

Completely excluded from the round 2 consultation were all the 845 households in the remaining roads in central Teddington who had rejected the CPZ proposals in round 1, and were told that they were not being included in round 2 consultations because **"they were already living in CPZ Zone T2"**. This was not true, as the T2 CPZ had not been approved.

An official four page letter was sent to all those households in their individual roads, with an offer to answer any queries residents had, when all that residents wanted was a straightforward YES/NO questionnaire. As a consequence there was total confusion, as residents could not vote. I did write to Mick Potter requesting that the CPZ T2 proposal should be withdrawn in line with what is happening in adjacent areas, and for a re-consultation, but that was refused.

Looking at the results in both areas, it does look as if the households in current Zone T, and households outside Zone T, may both have received the similarly confusing four page letter, and concluded that they could not vote without a proper YES/NO questionnaire, so the majority did not vote.

It appears that neither the retiring Councillors, nor the incoming Councillors, have consulted local residents, however they may have talked to each other, but that is certainly not enough. A complete re-consultation with properly designed documents, or a complete withdrawal of the Zone T2 proposals are the two options. In view of the lack of public enthusiasm so far, complete withdrawal, in my view, is the best option.

Brian Holder,
Chair Queens Road Residents' Association
Teddington

Dear Tribune,

Heathrow Noise.

I was very surprised by last week's Tribune's 'Teddington Tidbits' article which stated that: *'airlines save money by flying lower and slower on take-off'*.

That is completely untrue and goes against well established safe practices of aviation.

Jet engines operate most efficiently at high speed and high altitude so the idea of deliberately flying low and slow is anathema to any airline if only on cost grounds.

Aircraft climb as quickly as possible after take-off in order to get as high as possible over noise sensitive areas and then reduce power while over them. There are minimum safe climb-out speeds based on aircraft aerodynamics and flying slower than these could be dangerous so pilots simply don't do it. We want to stay alive and keep our passengers alive.

Pilots are legally required to follow departure routes and altitudes established by the Civil Aviation Authority with regard to aircraft safety and to reduce noise over built-up areas and there are numerous noise monitoring microphones around airports. Any non-compliance with normal procedures will be flagged by aircraft flight recorders and immediately investigated so a pilot would need a very good reason not to comply. Such a reason could be a severe engine failure although these are extremely rare and covered by strict aircraft operating procedures and pilot training. Any pilot who does not comply could be in serious legal trouble and in danger of losing his hard-earned license and thus his career. In the modern eco-conscious world, every pilot knows that he is being watched.

In my 31 years and 25,000 hours of flying around the world, I have never met or flown with any pilot who deliberately flouts safe practice or the law because they are one and the same.

One example of the misconceptions which can occur when laymen express opinions occurred in 2008 when a British Airways Boeing 777 landed slightly short at Heathrow. I was on duty as a Special Constable there and escorted some of the injured passengers and crew to hospital.

Immediately after the incident, a letter from a local councillor was published in a local newspaper saying how much worse it would have been if the aircraft been fuller and thus heavier because it would have landed even more short of the runway – in Hounslow. WRONG!

I immediately wrote to explain that it is a common misconception that heavy aircraft descend more steeply than light ones. In fact, an aircraft glide angle depends purely on its lift/drag ratio and only its speed varies with its weight. So, if the aircraft had been heavier it would actually have been in a better situation because it could well have reached the runway due to its increased speed and momentum.

My letter was published twice and the councillor even telephoned to thank me for the explanation!

This incident proves that what might appear obvious to a layman can be completely incorrect.

As I live under a Heathrow flight path, I well understand that noise is an important issue but it is essential that, rather than perpetuating myths, anyone expressing opinions about such a complex subject should stick to the facts.

Michael Jay, Hampton
British Airways Senior Pilot (Retired).
Super VC-10, Boeing 757, Boeing 747-100, Boeing 747-200, Boeing 747-400, et al.

Dear Tribune

Heathrow Noise.

I write this as a recently retired British Airways Boeing 747-400 pilot.

I fully understand the disturbance and negative health impacts of noise and air pollution from aircraft operations in and out of Heathrow. However, the Teddington Tidbits Heathrow article in last week's Tribune cannot be left unchallenged.

It is palpable nonsense to state that BA operates its aircraft lower than other airlines or that it does so deliberately or without regard to legally binding or safe departure and arrival procedures. All BA aircraft are operated strictly according to the manufacturers' mandated procedures which guarantee their safety. Furthermore, the airline strictly enforces adherence to the published noise abatement procedures at every airport including Heathrow as it is both in the interests of the airline and residents living and working under the flight paths.

There are a number of organisations, groups and people opposed to Heathrow expansion and to its current operations and I must count myself as one of them.

However misleading articles like the one above make it easy for the industry and government simply to brush genuine concerns aside when presented with such amateurish misinformation which, quite frankly, is total twaddle.

Alastair Rosenschein
Aviation Consultant.
Richmond.

Dear Editors,

Easy money

Your readers should be aware of a decision made at the Finance, Policy and Resources Committee on 27 June, concerning Elleray Hall.

The initial cost agreed for this project in February 2021 was £3.04M. Due to increases in costs of materials etc ("construction inflation") since then, an uplift of £1.11M was approved. Presumably a similar proportion of construction inflation will also apply to the costs (not yet divulged) of the proposed Twickenham Riverside development. Will this now reach £50M (or more)?

It is so easy to spend other peoples' money!

Jeremy Hamilton-Miller
Twickenham TW2



The White Lady of The Wood –

“The Beech Tree justly deserves its title of Mother of The Forest. Its tall, slender and elegant form providing dappled shade through a vivid green canopy in the summer months, and rich autumn hues in the Fall”. **c. From Britain’s Tree Story by Julian Hight.**

*“The Level Sunshine Glimmers
with Green Light” Coleridge*

Beech, Churchview Rd – Protect?

We were asked to give a presentation for a neighbourhood group in Broom Water and it reminded us of the Tribune article we posted about being a KnIMBY. It was a good starting point to the discussion with this friendly group who wanted to get more involved with nature around them and in particular The River Thames. After the below introduction we covered the issues of Light Pollution and Sewage into the River and then discussed a wide range of topics including recording and getting involved with local groups more knowledgeable than us! They were very generous contributing £100 to Wild Justice as our nominated charity as we do not charge. Below is our introduction caption and it proved relevant as you will see if you read on:

We would like to reclaim the word NIMBY from its negative 1980’s usage and make into a positive acronym: KNOWN in My Back Yard.

Throughout history people who love nature have recorded sightings where they live and contributed to the knowledge of habitats and species. (Nb: Big Butterfly Count coming and National Insect Week just finished.) Look out for these national and local initiatives to get involved in recording.

The term **Phenology**, coined by **Belgian Botanist Charles Morren 1849**, relates to:

“The Study of cyclic and seasonal natural phenomena, especially in relation to climate and plant and animal life.” Put simply it means noticing when you see your first butterfly, the emergence of leaves and flowers and the first migratory birds arrive in your garden. Simple observations from individuals over many years have led to important discoveries of changes in our natural world and led to more detailed investigations to support work to protect habitats and species which have been impacted by adverse factors.”

Photo of a Tree Creeper

Be a KNIMBY and know what is around you and how you can make a real difference in protecting our precious natural world; starting with where we know best - Our Own Back Yard!

Read on for a local issue you may wish to comment on and help save a Tree which is just as important as planting new ones.



New Proposal: Tree is **beech tree** located on the land behind 38 Campbell Road Our proposal is to fell the tree and replant another smaller, more manageable **birch tree** within 4 metres of where the current tree stands.

http://www2.richmond.gov.uk/PlanData2/Planning_CaseNo.aspx?strCASENO=22/T0359/TPO#docs



Previous attempts to build in two back gardens have all failed due, in part, to 'the loss of a protected tree'. Every house you see on the left side is a new build in previous garden space – some 23 dwellings and concreted parking spaces. One of the previous Applicants for this site stated that the Beech was a much-loved tree planted by his parents and he would protect it during the build if planning was granted. Seems like it is not so well loved anymore after so many years of attempting to build around it failed. The neighbours moved after seven years of receiving new planning applications every time they returned

from holidays so how many will now object/comment to encourage the Tree Officer and Councillors that this established tree is worth protecting still? We need this beautiful peace/piece of Nature after so much in-filling and loss of habitat in the immediate area. More is to come since the Appeal Officer Granted the locally contested new build application in the Garage Block Site at the end of Churchview Road and adjacent to the MOL/River Crane Corridor. **Be a KnIMBY and comment!**

River Crane Sanctuary three objections: We ask the Tree Officer to enforce the protection of this established tree for the following valid reasons to object:



- 1. Loss of this tree** is not mitigated by the proposal to plant a different and smaller tree: e.g., Larger carbon sink potential, established and larger habitat, surface water flooding relief.
- 2. Nature Conservation** - Bats navigation point to the River Crane. Light absorption and creation of dark space. Habitat for numerous wildlife.
- 3. Visual Amenity** - The tree is beautiful in a built-up environment. Bird song and views give pleasure and connection to nature for all ages and mobilities in the neighbouring flats/houses and for visitors.

River Crane Sanctuary: [Website](#) [Instagram](#)

Twickenham shop loses licence To protect children from harm

A Second convenience shop within proximity of Twickenham Green has had their premises licence revoked after two children hospitalised under the influence in the last 6 months.

Twickenham Locals Ltd, Heath Road Twickenham had their premises licence reviewed at a hearing on 21st June 2022.

The Council's decision made on 27th June 2022 was to revoke the licence as the evidence collated by licensing officer, PC Campbell-Harris clearly showed that the premises was not promoting the licensing objectives, particularly *protection of children from harm*.

Police worked with local residents and listened to their concerns gaining valuable information.

Over the past 6 months two young children from the local area have been admitted to hospital having been found unconscious with excessive alcohol effects in open spaces .

During the investigation it was established that underage sales of alcohol had become normal practice for them and the correct identification procedures had not been adhered to.

PC Campbell-Harris had visited the shop numerous times in an attempt to work with and educate the licence holder however the situation did not improve and a review of their licence was requested on the 19th April 2022.

*Twickenham's Neighbourhood Inspector, Jon McLoughlin stated
"This is the second shop in close proximity of Twickenham Green that has now had their alcohol licence revoked recently.*

Alcohol contributes heavily to Anti-Social Behaviour matters on the Green and we are doing everything we can to ensure this is stopped and that young people are kept safe"

The premises Licence Holder now has 21 days to submit an appeal against the decision if they wish.

Decision notice:

<https://cabnet.richmond.gov.uk/documents/g6456/Public%20minutes%20Wednesday%2015-Jun-2022%2010.30%20Licensing%20Sub-Committee.pdf?T=11>



**METROPOLITAN
POLICE**

Have your say on the borough's new Affordable Housing Supplementary Planning Document

The draft Affordable Housing Supplementary Planning Document (SPD) looks at ways in which the council can ensure that the maximum level of affordable housing is being delivered on development sites within the borough. The new detailed guidance will support the adopted Local Plan policies and look at how we will assess viability of proposed schemes within the planning process.

This update to the existing SPD, has been carried out to reflect new or updated requirements in the Local Plan and guidance published by National Government, the Greater London Authority (GLA) and the Royal Institute of Chartered Surveyors (RICS). By keeping the guidance up to date, we can ensure it maximises opportunities to deliver genuinely affordable housing through the planning process. The consultation is open for feedback until 1 August 2022.



We have also provided some explanatory notes that answer many common questions about the context of the SPD while highlighting some of the other work that is happening to prioritise the delivery of affordable housing. The information within the common questions can assist residents in better understanding more about the SPD and its role. View the frequently asked questions about the Affordable Housing SPD.

Cllr Jim Millard, Richmond Council's spokesperson for Housing, said:

"Delivering affordable housing is a key priority for this administration. The updated Affordable Housing SPD will play a key role in ensuring we can deliver these new homes. This is a technical document, but for any residents who wish to get more involved in local matters and the local planning process, I encourage you to take the time to familiarise yourself with the document and to please provide us with any feedback you might have."

[View the draft Affordable Housing Supplementary Planning Document \(SPD\).](#)

Anyone can make comments on the document, by emailing LocalPlan@richmond.gov.uk or by post to Spatial Planning and Design, London Borough of Richmond upon Thames, Civic Centre, 44 York Street, Twickenham, TW1 3BZ.

There may be a developer roundtable to enable further discussions during the consultation period if there is sufficient interest. If you would like to attend the event or for any other queries, please contact Joe.Roberts@richmondandwandsworth.gov.uk.

Hampton North Ward News

Councillor Geoffrey Samuel

E-SCOOTERS IN HAMPTON NORTH

Mixed views! Some residents feel that these are a new development to be encouraged and note that many European countries have introduced them: others mention their safety record and point to some notable accidents such as the death of Tony, the popular shopkeeper in Church Street, Twickenham. Recently the Council proposed a 'parking bay' in our ward. They point out that e-scooters can park only at approved bays and that new bays will open up new journeys. Initially the proposed location was the junction of The Avenue with Broad Lane and Percy Road. This received a mixed response and therefore the new proposed location is in the Tanglely Road Car Park. Council officers note that the e-scooter 'trial' which began in the autumn produced 'positive' feedback whilst other residents advise me of safety issues and accidents. Before expressing a view to the Council I would like to hear from local residents. Are e-scooters a welcome new form of transport or are they a road hazard? Do you want an e-scooter parking bay in the Tanglely Road Car Park or not?

ULEZ

The Mayor of London is proposing to expand the zone to our borough. I must emphasise that this is entirely a matter for Sadiq Khan and is not in any way the responsibility of the Council. This means that 'non-compliant' vehicles will pay a fee of £12.50 a day to use the vehicle in the Borough. As John said "It will cost me £62 a week to come to work". Non-compliant vehicles are diesels produced before 2015 and petrol vehicles before 2005. Owners of these cars are predominantly the less well-off. Owners state that they are gradually disappearing and that an immediate tax is unnecessary and unacceptable at a time of cost of living crisis. I have received numerous messages from local people objecting to the scheme at this time. Nick Rogers, our GLA member, is against the scheme now: he believes there are better ways of tackling air quality in outer London and that the Mayor's scheme will cost almost £400m to implement. He and his colleagues are running a petition against the scheme and I can forward the details to any resident who is interested.

BURTONS ROAD

The Council has, in error, been sending fines to those who have been granted an exemption. Locally many residents tell me that signage is inadequate. Residents in the roads near the big Sainsburys feel they are 'victims' of the scheme. Access to the congested Uxbridge Road is even more difficult and their slip road is used by drivers as a rat run. I believe that they too should be 'exempt'.

TANGLEY PARK RECYCLING CENTRE

Residents send me pictures of the mess and debris caused by incessant dumping. This is unacceptable. The Council has now decided to instal CCTV at selected recycling centres in the Borough. But not in Tanglely Park! I continue to press for CCTV or else the daily collection

which is so clearly needed

FRIENDS OF NURSERY GREEN

Initial meeting: Tuesday 5th July at 730pm in All Saints Church Hall. I hope to see you there! 'Friends' can do so much good for the local community

PARKING RESTRICTIONS IN FULMER CLOSE

The Council is proposing a large number of new double yellow lines. In all cases where parking restrictions are introduced the displaced traffic moves elsewhere. I understand that their estimate is 14 losses of parking space although I believe it to be considerably higher. Where would the displaced vehicles go? Do the residents in those roads agree? These are the questions I am asking

HAMPTON COMMON PITCH

The Council proposed an end-of-season "trail". However there is no intention to consult residents affected and I have asked that those most affected should be circulated and given the chance to respond.

SHORTER ITEMS

- Road [and pavement] works will begin in **South Road** on 4th July and last for nine weeks
- The Government has decided that there should be a Public Inquiry on the Council's proposals to impose a Compulsory purchase order of the Diamond Jubilee Gardens on Twickenham Riverside which are managed by a local charitable Trust. The hearing will be on 1st November
- I am supporting a local resident who was advised that her planning application would be determined by 1st June only to be told by the officer three weeks late that he was leaving the Council and passing the application to a colleague.
- Residents in **Briar Close** are pleased that, following my intervention, PA have dealt with trees in neighbouring Fulmer Close which were having an unacceptable effect on them.

I apologise for the recent delay in responding to residents whilst I was spending two weeks in Wales. I aim to answer within 36hours all e-mails sent to gjshn@btinternet.com. Messages sent to the council address are normally dealt with once or twice a week.

Teddington Tidbits

By 'Teddington Resident'



When might Teddington train station close its ticket office? More stories leaked this week from government and rail personnel that rail passengers will be pushed to buy tickets online or from machines as ticket offices close to “modernise” rail services and reduce costs. If you have a question regarding complex ticket needs that involve more than a ticket from point A to point B, then ??? Good luck.

Teddington has been so fortunate to have friendly, helpful personnel who said they have not been given any dates...yet. For years residents have pushed for more essential “modernisation” to provide a way for people who are less agile, are in wheelchairs or have baby buggies to get from one platform to the other across the tracks.

Voice your views at www.southwesternrailway.com

Community Toilet Scheme (CTS) Twickenham Green

Twickenham Cricket Club
The Cricket Pavilion, The Green, Twickenham, TW2 5TU
020 8894 3110

Opening hours:

Monday/Wednesday/Friday - 10am to 5pm

Saturday 11am to 10pm

Sunday when cricket is being played

(Also open when there is a cricket match and the pavilion is in use)

The Cricket Pavilion does not seem to display the obligatory CTS LBRUT sign. A permanent, visible TOILET notice is needed in the central area of Twickenham Green.

Teddington rejects ugly Wandsworth style yellow lines

Leafy Teddington rejects ugly Wandsworth style yellow lines- a view along Queens Road which has never needed them - and as is the case in most Teddington roads - still doesn't.

Brian Holder,
Chair Queens Road Residents Association
Teddington



Richmond Music Trust: Live at The Exchange

Richmond Music Trust are delighted to announce that they will be presenting Live at The Exchange on Friday 8 July at 7.15pm.

Following on from the success of last year's Live at The Exchange, this year's event will showcase vocal performances from even more secondary school students from in and around Richmond, accompanied by a band of professional musicians.

Expect an eclectic set list curated by the performers themselves including all genres and styles, as well as original songs. The event will also feature a group performance showcasing all the vocalists together, in celebration of the borough's talented young people.

This years Live at The Exchange will take place on 8 July 2022. The event will begin at 7.15pm and will run until 10pm, including time for an interval. Tickets cost £10, and the event is suitable for everyone ages 5+.

[Click here to book your tickets.](#)



Bienvenue à Richmond

Members of the Richmond in Europe Association, which promotes sporting, cultural & educational links with Richmond's twin towns of Fontainebleau in France & Konstanz in Germany, were pleased to welcome Evelyne Wenzel & Katia Hosek from Fontainebleau last week. They had come to Teddington for the Richmond Art Society Summer Exhibition at the Landmark Arts Centre, which included works by artists from Fontainebleau.



Madame Wenzel is the President of ARCIF, which is the equivalent of the Richmond in Europe Association in Fontainebleau, and during the course of her stay she met representatives of several local clubs & associations which are seeking partnerships with similar clubs & associations in Fontainebleau.

REA members were invited to the private viewing of the exhibition at the Landmarks Art Centre on Friday 24th June & the REA committee hosted a reception for our French guests in Teddington on Sunday 26th. The English patron of the Richmond in Europe Association, the Mayor, Cllr. Julia Cambridge, presented Evelyne with a book featuring oil paintings which are held by local galleries & the REA chairman, Alan Mockford presented Katia with a mug commemorating the 65th anniversary of the first twinning, which is to be celebrated in Richmond from 6th-8th June 2025. Over 120 local clubs, associations & schools have already registered their interest in participating & 500 guests from Fontainebleau & Konstanz are expected.

On Saturday 25th, after meeting by the new fingerpost sign outside the Town Hall, the French visitors were taken for a guided tour of Twickenham Riverside, which included York House & Orleans House, with their strong French connections, & the recently refurbished Marble Hill House. Being artists our guests were also delighted to have the opportunity to visit Turner's House.

For further information about the visit & the opportunities which our twinning with Fontainebleau & Konstanz affords please click on the following link:

<https://richmondineurope.com/past-events/>



INSPIRING WOMEN LECTURE SERIES



DESIREE SHEPHERD

Founder of Shepherd's Star



NATALIE O'ROURKE

Owner of Park Lane Stable

14th July | 7 - 9 PM | TW9 2RE | £5 PER EVENT

Sponsored by **English Heritage**, **National Lottery Heritage Fund**, and **Visit Richmond**. Hear from inspiring women in our community.

Ticket price will be donated to **White Ribbon** and **English Heritage**.

"LOVING THE LOCAL"

Join the infamous local **Desiree Shepherd** (Shepherd's Star), for an interview on connecting and building communities. Also, speaking is **Natalie O'Rourke** (Proprietor of Park Lane Stables for 13 years), she has provided riding experiences for children and adults with disabilities and additional needs.

**BOOK YOUR TICKETS:
RHACC.AC.UK/EVENTS**

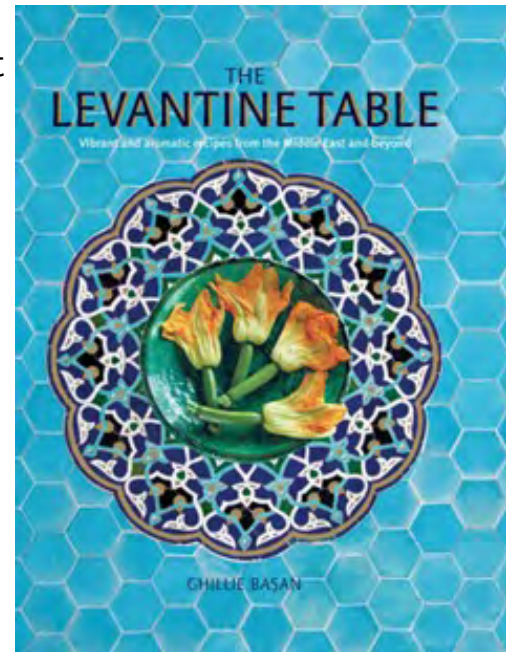


Ticket includes a welcome drink and networking with local businesses.



THE LEVANTINE TABLE - WHAT A GREAT SPREAD!

Ghillie Basan is a 'tour de force' when it comes to writing cookery books. Her ability to take the reader right into the heart of a country or region's cuisine is quite outstanding, as is her talent and prowess in producing a veritable library of fabulous culinary tomes. The other thing I really enjoy about her books is that her recipes are rarely complicated, and very few have a long ingredients list. Her latest book - *The Levantine Table* (published last week by Ryland Peters & Small, hardback, £25) is a collection of recipes inspired by the vibrant and diverse culture of the Levant - the region of the Middle East stretching the shores of the Eastern Mediterranean. It's right on trend, too, as supermarket chains such as Waitrose embrace the region's wonderful flavours with their own Levantine ranges and, thankfully, many of the new restaurants opening are offering Turkish or Middle Eastern fare. And of course, in Twickenham we have the wonderful Mediterranean Supermarket which is one of my favourite haunts.



In *The Levantine Table* you'll find small plates to relish (relish being the original meaning of the Persian word maza from which the term mezze derives) including popular dips, salads and small bites – hummus, baba ganoush, tabbouleh and falafel – as well as less familiar recipes. Freshly grilled fish and seafood, served with yoghurt dips flavoured with spicy harissa paste, or a simple coupling of mint and cucumber, are just the start of an ocean odyssey of tastes. For carnivores, chicken dishes are enhanced by all manner of spicy marinades, such as paprika and lemon-infused taouk; or how about grilled skewers of beef with a tahini-based tarator sauce; or one of the greats of Levantine feasting, slow-roasted lamb shoulder steeped in spices and served with a pomegranate, yoghurt and pistachio sauce? You'll want to return to these delicious dishes time and again.



Writer, broadcaster, and food anthropologist, **Ghillie Basan** has worked in different parts of the world as an English teacher, ski instructor, cookery writer, restaurant critic and journalist. With a degree in Social Anthropology and a Cordon Bleu Diploma, her interest in different culinary cultures has culminated in many books, some of which were nominated for the Glenfiddich, Guild of Food Writers, and the Cordon Bleu World Food Media Awards. Her cookbooks have also appeared regularly in the 'Best of the Best' and 'Top 50' lists; and she was described by Clarissa Dickson-Wright as one of the 'finest writers on Middle Eastern food'.

I'm absolutely loving this latest book and thought you'd like to try a few recipes from it to whet your appetite. They will make a delicious mezze if served together. I don't know about you, but with the gorgeous summer weather they are forecasting, I can't think of a better selection of dishes to enjoy with friends and family in the sunshine!

ROASTED RED PEPPER & WALNUT DIP (SERVES 4–6)

“Called ‘muhammara’ in Arabic and Turkish, I first ate this during my childhood in East Africa as you find versions of it wherever Levant traders sailed.”

- 3 red peppers
- 2 fresh red chillies
- 4–6 garlic cloves
- 150 ml olive oil
- 150 g walnuts, shelled
- 3 heaped tablespoons white breadcrumbs
- 2 tablespoons pomegranate molasses
- freshly squeezed juice of 1 lemon
- 2 teaspoons runny honey
- 1–2 teaspoons ground cumin
- a small bunch of fresh flat-leaf parsley, finely chopped sea salt



Preheat the oven to 200°C(400°F) Gas 6.

Put the peppers, chillies and garlic in an oven dish, drizzle with half the olive oil and roast in the preheated oven for about 1 hour. Turn the peppers and chillies from time to time until the skins are slightly burnt and buckled. Remove the chillies and garlic when they are ready but leave the peppers for the full hour or longer. Put the walnuts on a baking sheet and place in the oven for the last 10 minutes of the cooking time, so that they are lightly toasted.

Peel the skins off the peppers, chillies and garlic and remove any seeds. Roughly chop the flesh and place in a food processor with the walnuts, breadcrumbs, molasses, lemon juice, honey and cumin. Pour in the roasting oil and whizz to a purée. Drizzle in the rest of the oil whilst whizzing, add most of the parsley and season well with salt.

Tip the mixture into a serving bowl, swirl a little pomegranate molasses over the top and sprinkle with the rest of the parsley. Serve with strips of toasted flatbread.

FETA, GRILLED PEPPER & CHILLI DIP with honey (SERVES 4) - photo above

“This dip reflects the great tradition of marrying salty feta with honey, found in a number of dishes throughout the Levant region.”

- 1 red, orange or yellow pepper
- 200 g feta
- 2–3 tablespoons olive oil
- freshly squeezed juice of 1 lemon
- 1 teaspoon finely chopped dried chilli flakes
- a small bunch of fresh flat-leaf parsley, finely chopped
- a small bunch of fresh mint, finely chopped
- 1–2 tablespoons runny honey
- toasted flatbread, to serve

Place the pepper directly over a gas flame, under the grill or over a charcoal grill, turning from time to time, until it is charred all over. Carefully pop the pepper into a clean resealable plastic bag to sweat for 5 minutes, then hold it under running cold water and peel off the skin.

Squeeze out the excess water, cut off the stalk and remove the seeds.

Using a pestle and mortar, or a food processor, pound the pepper to a pulp with the feta. Add the oil, lemon juice and dried chilli flakes. Gently beat in most of the parsley and mint and spoon the mixture into a serving bowl.

Heat the honey in a small pot and drizzle it over the dip. Garnish with the rest of the parsley and mint and serve with toasted flatbread.

ORANGE SALAD with dates, chillies & preserved lemon (SERVES 4–6)

“This attractive, refreshing salad can be served as an accompaniment to spicy meat or poultry dishes, and it also makes a delicious addition to any mezze spread.

There are different versions of this salad throughout the Levant region. Some include slices of fresh lemon or lime, while others add onions and black olives instead of dates and preserved lemon, but all are sweet, juicy and slightly salty.”

- 4 ripe, sweet oranges
- 175 g moist dried dates, stoned
- 1 fresh red chilli, seeded and finely sliced
- the peel of 1 preserved lemon, finely sliced
- 2–3 tablespoons orange blossom water
- a small bunch of fresh coriander, roughly chopped

Peel the oranges, removing as much of the pith as possible. Place the oranges on a plate to catch the juice and finely slice them into circles, removing any pips. Tip the orange slices into a bowl with the juice, or arrange them in a shallow dish.

Finely slice the dates, lengthways, and scatter them over the oranges. Scatter the sliced chilli and preserved lemon over the top and splash the orange blossom water over the salad. Leave the flavours to mingle for at least 10 minutes, garnish with the coriander and toss very gently just before serving.





The Birds

by Conor MacPherson, based on the novel by Daphne du Maurier

St Michaels Players at Chiswick, then tours to Annexe Theatre, Edinburgh until 27th August

A chilling stage adaptation of Daphne du Maurier's 1952 short-story, *The Birds* is a self-styled 'tense-psychodrama', delivering intrigue and suspense in abundance and managing to succeed where many others fail: to produce a thriller that is worthy of the genre.

The mood is set from the start. As the play begins, the auditorium is plunged into darkness, broken only by an ethereal, blue glow. The accompanying eerie music is punctured only by the unsettling



sound of beaks, seemingly tapping on the roof and walls of the theatre, climaxing in a cacophony of bird screeches, human screams and the sound of breaking glass. Such is the strength of this immersive beginning, that it almost feels that the audience themselves have narrowly escaped the angry flock by diving into the set's abandoned house, adding to the claustrophobic experience that is to follow.

This simple set gives the play a post-apocalyptic feel, as house is now the make-shift refuge of the diary's owner, Diane and Nat two strangers whose fates have collided in their attempt to escape from these flocks of blood-thirsty birds – birds who have inexplicably turned against humanity, stopping at nothing to fuel their insatiable appetites for human flesh.... and eyes!!!

On their quest for survival, the pair are soon joined by Julia who, we learn, has been forced to flee from a near-by commune of other survivors, mainly due to the unwanted advances of some of the men there. In a particularly moving moment, brilliantly acted, we also learn that she blames herself for the violent death of a friend, running from a frenzied bird attack but, in doing so, leaving her companion to suffer this terrible fate alone.

Read David Stephens' review at www.markaspen.com/2022/06/25/birds

Photography courtesy of SMP



Our Country's Good

by Timberlake Wertenbaker

Teddington Theatre Club at Hampton Hill Theatre until 2nd July

A breath of fresh sea air and a trip of a lifetime? Be transported on a crowded convict ship bound for Australia in the 1780's.

With a tense and eerie beginning that set us on our course, we are introduced to the cast of ten playing twenty characters from Royal Marine officers to Cockney convicts. With the only costume change being a coat and wig, each actor brings all the roles they play into life.



This awe-inspiring ability to make each character so lifelike is shared by the whole cast, from



Nigel Cole's immensely impactful depiction of a sea-worn man going mad with guilt for assisting in another man's hanging, to Heather Matthew's hilarious yet relatable Danny Bryant. Bryant is a character which could have easily been performed as a two dimensional clown but through Bryant's exceptional efforts is made into a person the audience can truly empathise with and believe.

Similarly, the role of Liz Morden, a poverty stricken woman who has had to bite and bark to survive, could have been played as the typical hard bully but Dionne King breathes life into this poor creature so much so there could not have been a

dry eye in the house when Morden was being measured for her noose.

The simplicity of designer Fiona Auty's stage layout adds to the overall atmosphere of the play. For although it comprises only large wooden boxes and white sheets designed to look like sails, it truly does look like a ship, which feels claustrophobic and busy. Skilful lighting by Colin Swinton creates a whipping effect as one of the convicts is seen being flogged, which has you hooked from the get go.

TTC's production creates one hell of a journey back in time. If we were not on a convict ship, it would be called pure escapism.

Viola Selby's review at

www.markaspen.com/2022/06/29/country-good-ttc

Photography by Stephen Sitton



Who Killed the Football Manager?

by Chris Martin

Edmundians at Cheray Hall, Whitton until 2nd July

Just let me say that I was floored. I really thought I knew who had done it! That's as much of the plot that I will give away.

In a cabaret style setting, we sat round at tables with anticipation, surrounded by intriguing photographs of the suspects. My personal favourites were Trudy Goodnight (Monica Kingsland) and Terry Towling (Marc Batten) – especially his Kevin Keegan perm.



This inter-active murder mystery is set in 1974 in the Headmistress' study at an ailing boarding school. Here we were introduced to Bob Slayer a bitter former football star (a convincing Dave Young); then Steve Swift, a hungry writer (Stephen Wink) and Eileen Armstrong-Payne the desperate headmistress (Theresa McCulloch). With desperation all round with these three characters there were plenty of motives.

This scenario was played out with a tinge of farce and witty dialogue. More characters arrived, Daisy Chain, the enthusiastic PE teacher (Mary McGrath) and Matthew A. Dorr, an unhappy pupil. This role was Arthur Holmes's, a promising young newcomer, whom we had the pleasure of seeing in [The Red Lion](#) recently. However, the whole cast were promising as they got into the spirit and gusto of this production.

Zofia Sochanik's Patricia O. Dorr, Matthew's very pushy mother, plus my aforesaid favourites, Trudy Goodnight and Terry Towling came armed with strong motives and a story to tell. Well, I'm not going to say who was actually bumped off, but a dead body came up at the end of the first act.

Act Two gave us the joys of Detective Inspector Spence (Becky Halden), sleek with 'his' long blonde wig and hapless Deputy Inspector Watkins (Kayleigh Easterbrook) as suspect's stories and grudges unravelled. When Spence finally revealed the murderer, I was completely wrong.



Director Paula Young really scored a goal with *Who Killed the Football Manager?* Get yourselves down there if you can, and see if you can deduce the murderer better than I could!

Read Heather Moulson's review at www.markaspen.com/2022/07/01/killed-football-mgr

Photography by Pixel Panda



The Rise and Fall of Little Voice

by Jim Cartwright

Neil Gooding at Richmond Theatre until 2nd July, then tour continues until 16th July

Hardly seems possible that it's thirty years since the Award winning comedy-drama *The Rise and Fall of Little Voice* premiered at the National Theatre. The latest incarnation is now in Richmond. Set in a gritty northern town, it follows the rise of a reclusive young woman as she discovers success, and then outlines her emotional difficulties when having to cope with the expectations of her mother, Mari and of Ray Say, an aging, fading, unsuccessful impresario.



This production is distinguished by its highs and its lows. There are times when the actors, and the singing successfully engage, such as when William Ilkley in the role of Mr Boo uses the real audience in his club scenes, as a Bernard Manning sort of character. Another excellent, all-round performance was provided by Ian Kelsey as Ray Say. Kelsey is an actor totally at ease on the stage. Inaudibility and poor vocal projection is a problem for other actors in this productions.

The play was originally written for the Lancashire actress, Jane Horricks as Little Voice and this critic admits to wondering how the current singer and actress, Christina Bianco, a performer who has achieved international fame through her You Tube performances, will rise to the demanding task. She portrays the character of a young girl on the autistic spectrum, and if this had been mime, full marks. The scene in which Ray first hears her song, left this critic cold, for her voice was small and did not carry. When using a microphone, however, Bianco redeems herself and the audience is treated to the depiction of a variety of stars, such as Edith Piaf, Lulu and Judy Garland. Her final and the last scene in the play when Little Voice discovers her own voice and sings *Over the Rainbow* is a truly breath-taking theatrical moment.



Read Celia Bard's review at

www.markaspen.com/2022/06/29/little-voice-rt

Photography by Pamela Raith

TRAVELLER'S TALES 126

CRETE BEFORE THE CROWDS

Doug Goodman recalls a trip to Crete before the arrival of mass tourism



It was 4.00 am and the noise below my bedroom window was deafening. I had spent the previous night on the deck of a ferry travelling from Piraeus to Heraklion and was in no mood for the disturbance. I politely asked the donkey to keep quiet but to no avail. A carefully aimed orange had the desired effect which the animal thoughtfully chewed. I slept for another three hours until the village phone started ringing. So began my first day in the tiny fishing village of Bali just west of Crete's capital Heraklion. The village was undeveloped and had made no concessions at that time to tourism. It was after all 1973 and package tours were just beginning to take off to 'exotic' places like Greece. Working then in the holiday business I wanted an independent type of break. A flight to Brindisi and a lift on the company's cruise ship to Athens was a good start but from then on it would be local transport and basic accommodation. Bali was indeed basic. The washing facilities consisted of a cold water shower in the yard shared by chickens and that donkey. The village was three kms from the bus stop down a dusty track. Georgio was the owner of the two rooms, which had a sign saying 'rooms to rent', and also owned the adjacent taverna where fish he caught was served. The bar offered great entertainment as it formed the village centre with the one and only telephone. Whenever it rang the nearest person had to find the local for whom the call was intended. Georgio and his family were very hospitable. Several times I went fishing with them and one on occasion an 11.00 pm expedition in a tiny boat on a rough sea returned nine hours later. A bucket of red mullet was all that had been caught.



Dawn Chorus



Heraklion Port



Knossos Murals



Reconstruction at Knossos

EXPLORING CRETE

Heraklion was a dusty industrial town but world-famous for its archaeological site of Knossos. Claimed to be Europe's oldest city, Knossos was settled in the early Neolithic Period and became the centre of Minoan civilisation. Abandoned in the Late Bronze Age – 1380-1100 BC- the site was not excavated until 100 years ago. Archaeologist Arthur Evans did much to protect the ruins but his recreation of the buildings did not receive universal acclaim. Myths tell of a terrifying creature called The Minotaur – half man and half bull- that lurked in the labyrinth below the palace.

I headed west to Chania, a town with a charming harbour area with restaurants by the waterside. Fishing boats would land their catch directly into the many tavernas where the locals would sit for hours enjoying a glass of ouzo or the strong red Minos wine. I had read about the Monastery at Arkadi founded in the 5th century and how it became a refuge for Cretans during the siege by Ottoman rulers. Most of Crete was controlled from 1648 by the Ottomans but in 1866 a revolt occurred which threatened to overthrow the conquerors. Arkadi provided shelter for 964 people of whom only 259

were armed. Against them was an army of 15,000 equipped with 39 cannon. The majority of the defenders were killed in the brutal battle and the unarmed including women and children hiding in the powder store detonated the explosives rather than be captured. Arkadi remains a very important place in the history of Crete.



Arkadi



Typical Taverna



Harbour side at Chania

THE GORGE OF SAMARIA

A walk down the Gorge of Samaria provided spectacular scenery. A bus from Chania dropped me at the plateau of Omalos some 1250 meters above sea level. From there it was downhill all the way to the Southern Sea. The trip through the national park was 16 kms of tough going. The path was steep, slippery and rocky and the journey took nearly seven hours. Arriving eventually at Agia Roumeli I hoped to catch a boat to the town of Hora Sfakion and then a public bus back to Chania. The Gorge at its most spectacular spot is four meters wide and 300 meters high. If rain has fallen and in winter time the narrow channel can be a fast flowing river. Strong shoes, a hat, water and some food for the trip are essential and it really helps if you're fit. But it was one of the most thrilling treks I've ever made.



Minos Wine



Cretan Carpets



Kreta

This visit took place nearly 50 years ago. Today Crete has welcomed mass tourism with some rather unsightly resorts. The village of Bali still existed but was dominated by big hotels on the hill side when I visited the area in the late 1980s. Traditional hospitality still can be found in the mountains away from the tourist hot-spots. Crete is the largest Greek Island with a distance of about 160 miles from west to east and between 7 and 37 miles wide. With a car to explore the ancient sites, mountain villages and hidden-away beaches you can enjoy the best of Crete. It's certainly my favourite Greek Island.

Gabon and Togo - new members of The Commonwealth

Gabon and Togo have joined The Commonwealth, the 55th and 56th members; their applications for membership were accepted at the Heads of Commonwealth Meeting in Kigali, the capital of Rwanda, last week. Rwanda became a member of The Commonwealth in 2009.

Fifty-six countries in Africa, Asia, the Americas, Europe and the Pacific are members of The Commonwealth, created in 1949. Thirty-two of the world's small states are Commonwealth members, with populations of 1.5 million or less. Queen Elizabeth II has been the Head of The Commonwealth since 1952.

The Gabonese Republic is in Western Africa, bordered by the Atlantic Ocean, Equatorial Guinea, Cameroon and the Republic of the Congo. A French settlement was established in 1839 and a French governor to Gabon was appointed in 1866.

In 1910 Gabon formed part of the Federation of French Equatorial Africa - Afrique Equatoriale Francaise (AEF). Other AEF members were the Central African Republic, Chad and Congo (Brazzaville).

Gabon achieved independence in 1960.



More photos and information for Gabon: <https://worldinfozone.com/gallery.php?country=Gabon>

The Togolese Republic is in Western Africa. It is bordered by Ghana, Burkina Faso and Benin.

The Portuguese arrived in Togo at the end of the fifteenth century. They were followed by the Danes, French, British and Germans; Germany established a protectorate over Togoland in 1884.

At the beginning of the First World War (1914-18) French and British troops captured Togoland. In 1922 a League of Nations mandate divided the administration of Togoland into two: the French were given the east of the country and Britain had administration of the west.

In 1957 the British region of Togoland was administered with the Gold Coast becoming part of Ghana and the French area of Togoland became self-governing. Togo achieved independence in 1960.



More photos and information for Togo: <https://worldinfozone.com/gallery.php?country=Togo>

REMEMBER! THE SOMME

Exactly 106 years ago yesterday, on July 1st 1916, The Battle of the Somme began in Northern France. The plan was to drive the German forces from their trenches, which had formed the front-line between the invaders and the allied armies. The well-fortified trenches stretched from Belgium to the Swiss border ensuring that a stalemate had existed between the opposing forces since early 1915 with a strip of 'no-man's land' dividing the troops. For a week prior to the 'big-push' British guns had fired over 1.5 million shells at the enemy positions. It was believed that when allied troops went 'over the top' all German troops would have been killed or demoralized to such an extent that they would surrender. But the British commanders had overlooked the facts that most enemy soldiers would survive in their deep shelters, that the plan of attack was known and that many shells were too light to do much damage. So confident were the authorities that British troops had been told to walk towards enemy strongholds in formation. The German troops came up from their dugouts, set up machine guns and mowed down the advancing British regiments in the thousands.

It was the most tragic day in the history of the British army: 57,470 casualties and 19,240 deaths were recorded. Some territory was gained and the British press reported on a 'victory' before the full extent of the disaster became known a few days later. The Somme battles continued until November 18 with several major attacks taking place notably at High Wood where tanks appeared for the first time on September 15th.

A ceremony is held at the Thiepval Memorial every July 1st to commemorate those buried in the many local cemeteries and the 72,000 who have no known grave.



Commemoration at Thiepval



Thiepval Memorial to the Missing



Preserved Trenches



Unexploded Shells Unearthed



Preserved Tank at Flesquieres



A Grave of a Soldier in The Civil Service Rifles



Remembering Hong Kong - Twenty-five years on

As a teacher in the London Borough of Richmond upon Thames I was a pioneer in the use of the internet in education; a project which eventually led around the world to produce worldinfozone.com, an interactive project which was showcased throughout the years by government organizations in Italy and Sweden - one of the first projects shown on BBC Click - the project was approved by the National Grid for Learning, Scotland's Grid for Learning and EdNA Online, the Education Network Australia. And it all began twenty-five years ago in Hong Kong.

As an exhibitor at various events in London the project was acknowledged by companies such as BT, keen to explore the potential of the internet. The idea of a project with students in another country was suggested and before long, together with a small group of students, a year long interactive project with students in Queen's College, Hong Kong had begun.

With some initial funding from the London Borough of Richmond upon Thames we were able to travel to Hong Kong two weeks before the Handover of Hong Kong to China and witness the preparations for Chris Patten's Handover, visit schools, the Hong Kong and Shanghai Bank (HSBC) headquarters and various other organizations and schools.

Photographs of the HONG KONG visit:



More information about Hong Kong and the 1997 visit can be seen here <https://worldinfozone.com/gallery.php?country=HongKong>

"In 1984 Britain agreed to hand back the whole colony to China. The Sino-British Joint Declaration promised that Hong Kong's social, economic and legal system would be protected for fifty years. The Chinese used the phrase: "one country two systems".



St Mary's University

St Mary's University Extends Partnership with Aegean Omiros College

St Mary's University, Twickenham and Aegean College in Greece have signed a new validation agreement for Aegean Omiros College's (AOC) MBA programmes. This builds on the already successful partnership between the two Institutions initially established in 2020.



Under the new partnership, AOC students are awarded a St Mary's University MBA degree on successful completion of AOC's MBA programme in the following pathways:

- MBA
- MBA (Human Resources Management)
- MBA (Marketing Management)
- MBA (Digital Marketing Management)
- MBA (Retail Management)
- MBA (Finance and Investments)
- MBA (Sustainability and Environmental Management)
- MBA (Health Management)
- MBA (Tourism and Hospitality Management)

Founded in 1946, Aegean College offers degrees in Business, Allied Health, Social Sciences, Shipping, Tourism, IT and Sports. The college has campuses across Greece in Athens, Piraeus, Larissa and Thessaloniki.

Speaking of the Partnership, St Mary's Acting Head of the Institute of Business, Law and Society, Professor Karen Sanders, said,

"I am delighted that St Mary's School of Business will further contribute to the deepening of St Mary's relationship with the Aegean Omiros College. My thanks to all our colleagues at both institutions who have worked hard to bring this agreement to fruition. We look forward to future collaborations in teaching and research".

The Head of Collaborative Provisions, Angela Simeonidis, from Aegean College added,

"The introduction of a range of specialist MBA programmes, validated by St Mary's University, Twickenham, marks a milestone in the offer of postgraduate education tailored to meet the specific knowledge, skills and competencies required within specific business sectors of the Greek and international market."

Further information about [Aegean College can be found on their website](#).



**St Mary's
University
Twickenham
London**

Powerjam musicians perform in New York City at international rock festival

Local young musicians, from the Twickenham-based not-for-profit band project called Powerjam, performed in New York City this month, having been selected to represent the UK at the Kids Rock For Kids international teen rock band festival.

Having assembled some of the most talented young bands from around the world, the event raised money for Ukraine and kids in crisis, and a documentary of the event is to be released from New York in the coming months.

Powerjam is a unique band project that offers the complete rock and pop band experience to local budding, serious and disadvantaged musicians ages 9 to 18.



Powerjam works to ensure musicians have weekly rehearsals, regular gigs and professionally recorded and released music on streaming platforms through the Powerjam label, which allows their young musicians to retain full copyrights of their songs.

Find out more about [Powerjam](#).

Join us for the Mayor's Art Competition at Asgill House

The competition will run from July to September with art sessions at Asgill House, Richmond. Art can then be taken home to finish and then entered in the competition by Wednesday 21 September 2022.

The competition ends on Wednesday 21 September. The winning artwork will be the recipient of The Asgill Prize, £500.00 (Sponsored by The Asgill House Trust).

Entries cost £10 and include a special art session in the riverside gardens of Asgill House, Sir Robert Taylor's Grade I listed architectural gem.

The competition ends on Wednesday 21 September, and the winner will be chosen by the Mayor of Richmond between 22 and 23 September 2022.

The winning artwork will be exhibited in the Mayor's parlour for the duration of her term. The winning artist and a guest will also be invited to The Mayor's Charity reception at Asgill House held at the end of her term.

Art sessions will run on Saturdays between 11am and 2pm on 30 July, 27 August, and 10 September.

[Find out more about the competition and book your place.](#)



Sunflower Seeds Grow Charity Funds

Squire's Garden Centres raise over £1,000 for 16 local charities with Sunflower Seed Initiative



Squire's Garden Centres offered a free pack of sunflower seeds during the month of May, in return for a donation to the local charities that each Squire's centre supports*, culminating in raising over £1,000.

Children* were encouraged to go along to their local centre and pick up a free pack of sunflower seeds and a growing guide, containing expert tips to ensure the sunflowers reach for the sky! A donation to the centre's local charity was invited, with donations going directly to the local charity to help continue to raise vital funds for them.

Sarah Squire, Chairman of Squire's Garden Centres, comments: "We are really keen to encourage children to get involved in growing their own plants - and sunflowers are great to capture fascinated young minds as they can produce such amazing displays!

"This initiative has also enabled us to generate more funds for each of our 16 centre's chosen local charities, which has raised a tremendous amount, while getting children interested in growing from seed.

"We are looking forward to the next stage of the initiative in August, as we invite families to send in photographs of their children next to their tallest sunflower!"

To Enter the Competition in August to win £100!

- Families who have planted their sunflower seeds are invited to take a photo of their child next to their tallest sunflower with a measuring tape, that clearly shows the height.
- Submissions to be made between 1-20 August 2022 and photos should be emailed to competitions@squiresgardencentres.co.uk or posted on Squire's Facebook or Instagram page.
- Full details can be found on the growing guide on Squire's website: https://www.squiresgardencentres.co.uk/garden_advice/sunflower/
- The winner will be announced by 27 August 2022 and will receive a £100 gift voucher to spend at Squire's! There are also 2 Runners Up prizes of £50 Squire's gift vouchers.

To take part, participants need to be under 16 years of age.

SQUIRES
GARDEN CENTRES

Bees return to Jersey Road

Pre-season gets underway

By Brentford FC



The final day of June brought about the return of First Team players to Jersey Road ahead of the 2022/23 Premier League season.

With players that featured in international fixtures over the summer having extra rest, the initial group returning to Jersey Road included Rico Henry, Ethan Pinnock, Ivan Toney, Vitaly Janelt, Bryan Mbeumo, Josh Dasilva, Sergi Canós, Shandon Baptiste, Mads Roerslev, Mads Bech, Tariqe Fosu, Saman Ghoddos, and Kristoffer Ajer.

Some familiar faces returned with Dominic Thompson, Luka Racic, Ellery Balcombe, Charlie Goode, and Marcus Forss back in West London after time away with loan clubs. Fin Stevens and Paris Maghoma also enjoyed their first day as members of the First Team squad following their promotion from Brentford B during the summer.

Looking to build on a memorable first campaign back in the top-flight since 1947, we get underway this time around with a trip to Leicester City on Sunday 7 August. There will be five full weeks of training for those that are back today before that first day of the season. Our opening pre-season game will be against Boreham Wood next Saturday, 9 July. Games have also been confirmed against VfB Stuttgart, VfL Wolfsburg, Brighton and Hove Albion, and Real Betis.

Stay tuned to our website and social channels over the coming days and weeks for more from training ahead of the new campaign.



Twickenham Community Residents Season 2022-23 Ballot Opens Next Week

Season 2022-23 Ballot Information

This is to remind you that the Twickenham Community Resident ticket ballot for England senior men's matches against New Zealand and South Africa in the Autumn Nations Series 2022 and against Scotland, Italy and France in the Guinness Six Nations 2023 opens next week at 10am on Wednesday 6 July and closes at 5pm on Tuesday 19 July 2022.

As a local resident you can enter the ticket ballot for up to two tickets and you will also be given early access up to four tickets for both the Argentina and Japan matches this coming autumn. Ticket limits will apply, and all tickets are subject to availability. Please do not over order as tickets are not issued on a sale or return basis.

Key Dates

Ballot opens: Wednesday 6 July 2022

Booking window (Argentina & Japan): Thursday 14 July 2022

Ballot closes: Tuesday 19 July 2022

Payment for successful entries debited: Wed-Thurs 20-21 July 2022

Results for all entries: Friday 22 July 2022

Matches at Twickenham Stadium

England's senior men's fixtures in the Autumn Nations Series 2022 are:

- Sunday 6 November 2022 - England v Argentina - KO 14:15
- Saturday 12 November 2022 - England v Japan - KO 15:15
- Saturday 19 November 2022 - England v New Zealand - KO 17:30
- Saturday 26 November 2022 - England v South Africa - KO 17:30

England's senior men's fixtures in the Guinness Six Nations 2023 are:

- Saturday 4 February 2023 – England v Scotland – KO 16:45
- Sunday 12 February 2023 – England v Italy – KO 15:00
- Saturday 11 March 2023 – England v France – KO 16:45

Delivery Method

All tickets will be delivered via the Twickenham Stadium App, no later than 48 hours after payment has been processed.



Red Roses name 2022/23 pre-season training squad

Head coach Simon Middleton has named a 37-player pre-season training squad ahead of the 2022/23 campaign.

England begin their preparations on Monday (4 July) where they will meet for the first of three mini-training camps throughout July, all taking place at the University of Bath.

They will then continue to fine-tune their preparations for New Zealand with more camps throughout August in the build-up to their two September Internationals v USA (Saturday 3 September, Sandy Park, kick-off 3pm) and Wales (Tuesday 14 September, Ashton Gate, kick-off 7.30pm). Tickets for both matches are available [here](#).

All 30 contracted players are selected including Abby Dow who will continue her rehabilitation from a broken leg throughout the pre-season period.

Cath O'Donnell, who missed the majority of last season through injury is back in the fold as is Loughborough Lightning team-mate Morwenna Talling following an anterior cruciate ligament injury.

Meanwhile, Claudia MacDonald also returns to the group as the neck issue that caused her to miss the 2022 TikTok Women's Six Nations and final months of the Allianz Premier 15s season has resolved.

Reigning World Rugby player of the year Zoe Aldcroft is included alongside captain Sarah Hunter and vice-captain Emily Scarratt.

Scrum half Lucy Packer and front row forward Maud Muir are both selected after impressive breakthrough campaigns.

Fresh from her two maiden caps in this year's Six Nations, Gloucester-Hartpury's Emma Sing, who was also the Allianz Premier 15s' top points scorer for 2021/22, is also included.

England Rugby are also delighted to confirm the appointment of Robin Eager as the Red Roses' new physical performance lead.

Eager worked in the academy systems at Leicester Tigers and Gloucester Rugby in his early career. Eager has spent the past eight seasons working within the England Men's Pathway, initially supporting then leading the strength and conditioning provision for the U20s side.

Eager has also previously been involved in the senior men's set-up throughout the 2015/16 season.

His most recent role at the RFU was Men's Pathway Athletic Performance Manager, a position he has held since 2019.

Middleton said: "It goes without saying this is a big season for the Red Roses, with this calendar year alone culminating in the tournament in New Zealand.

"Returns for Cath O'Donnell and Morwenna Talling are a huge boost for us after long term injuries. Both are extremely talented and committed players who have worked hard to return to fitness. They bring additional qualities to the group and add to what is already a highly competitive squad. Cath has an outstanding physical presence in all aspects of the game and has consistently performed on the international stage. Morwenna is also very physical and has a great rugby brain and skill set. Both players have the ability to change the momentum of play, which is a key attribute for any international player. It's vital they're in camp and can spend some consistent time with the group.

"We're also really pleased to welcome Claudia back following her successful return from a neck injury. As with

Cath and Morwenna, to be able to add a player of Claudia's ability and quality to the squad is a real boost for us at this stage and further strengthens our depth at scrum half. Claudia's ability to play wing to a high level adds even greater strength in depth to the squad and provides some essential versatility.

"I'm really happy with the feel of the squad. We have plenty of experience, a sprinkling of really talented young players and players who will be coming back into the set-up after a period out. I feel the balance is very good and the competitive levels will be very high.

"On the youth front, Sadia Kabeya, Lucy Packer and Maud Muir certainly fall into that category as does Rosie Galligan, who has had a great impact on the international scene this year and is still only 24. The likes of Connie Powell and Emma Sing were part of our Six Nations squad and have deserved another opportunity to stake their claim for New Zealand. With Emma Sing we've seen real progression through her training with the Red Roses. She had a brilliant season for Gloucester-Hartpury and her physicality and strong all round skill set brings a point of difference to our back field options. There is a good balance of youth and experience across the squad for sure.

"We have named this squad but there are a number of key players we are still monitoring, keeping an eye on and who could most definitely join us later in the pre-season period.

"We're also thrilled to welcome Robin Eager to the set-up. Robin joins us with a wealth of experience and is exactly what we are looking for to help us take our performance to the next level. We're delighted he's joining the programme.

"Bath is a great location. We spent some of our pre-season camps there last year, the facilities are excellent, and we were made to feel very welcome."

Forwards

Zoe Aldcroft (Gloucester-Hartpury)
Sarah Beckett (Harlequins)
Sarah Bern (Bristol Bears)
Hannah Botterman (Saracens)
Shaunagh Brown (Harlequins)
Bryony Cleall (Wasps)
Poppy Cleall (Saracens)
Amy Cokayne (Harlequins)
Vickii Cornborough (Harlequins)
Lark Davies (Bristol Bears)

Vicky Fleetwood (Saracens)
Rosie Galligan (Harlequins)*
Sarah Hunter (Loughborough Lightning)
Sadia Kabeya (Loughborough Lightning)*
Alex Matthews (Gloucester-Hartpury)
Maud Muir (Gloucester-Hartpury)
Cath O'Donnell (Loughborough Lightning)
Marlie Packer (Saracens)
Connie Powell (Gloucester-Hartpury)*
Morwenna Talling (Loughborough Lightning)*
Abbie Ward (Bristol Bears)

Backs

Holly Aitchison (Saracens)
Jess Breach (Harlequins)
Abby Dow (Wasps)
Zoe Harrison (Saracens)
Tatyana Heard (Gloucester-Hartpury)
Natasha Hunt (Gloucester-Hartpury)*
Ellie Kildunne (Harlequins)
Claudia MacDonald (Wasps)*

Sarah McKenna (Saracens)
Lucy Packer (Harlequins)
Amber Reed (Bristol Bears)
Leanne Infante (Bristol Bears)
Helena Rowland (Loughborough Lightning)
Emily Scarratt (Loughborough Lightning)
Emma Sing (Gloucester-Hartpury)*
Lydia Thompson (Worcester Warriors)

*denotes non-contracted player

The forthcoming pre-season training camps act as crucial preparation for the team's Rugby World Cup 2021 campaign which begins on 8 October. Tickets are now available [here](#).



The creation of the UK Infrastructure Bank

The UK Infrastructure Bank was launched quickly but it is not yet fully operational. The Bank will now need to manage a range of internal and external challenges if it is to achieve the government's aims for it, according to a report by the National Audit Office (NAO).

HM Treasury launched the Bank in June 2021 to encourage private finance alongside public investment to achieve two strategic objectives - helping to tackle climate change, and supporting regional and local economic growth. It has been allocated £22 billion of public funds in the first five years of its life for equity investments, loans, and guarantees to support infrastructure projects. In setting up the Bank, HM Treasury applied lessons learned from the creation of other interventions such as the Green Investment Bank and the British Business Bank.

HM Treasury wanted to move quickly in setting up the Bank, in part due to the loss of the European Investment Bank infrastructure funding following the UK's decision to leave the EU. The planning process for the Bank took only 10 months; 14 months shorter than for the Green Investment Bank and the British Business Bank. HM Treasury truncated some important elements of the usual process or deferred them until after launch. For example, HM Treasury produced one business case, (rather than the usual three), and it was still working on this after the Bank had launched. HM Treasury made the decision to launch the Bank with a number of aspects yet to be settled, such as detailed objectives and performance metrics, staffing and business processes. HM Treasury has taken steps to minimise risks to the taxpayer, such as investment limits.

Since the launch, the Bank has worked hard to build these structures and processes. Staff numbers have increased from six in June 2021 to 127 in April 2022, but the Bank is heavily reliant on interim, temporary and contract staff. A key element of the Bank's governance needed to make it a fully operational organisation is the completion of the remaining Board committees. This will only be complete when the non-executive directors, whose appointments were announced in June 2022, take up their posts.

The Bank has now developed processes for encouraging, scrutinising and approving investments as well as a suite of governance and risk management approaches. The Bank currently relies heavily on some existing HM Treasury technology such as for financial management, though it has plans in place to develop its own technology solutions.

By the end of May 2022, the Bank had entered into five deals, all loans, amounting to £311.5 million. Some of the investments made to date are similar to loans other parts of government already make, and they are not representative of the full range of investment government hopes the Bank will deliver. For example, it has not yet made any equity investments or issued guarantees. The Bank has sought to proceed with deals at a pace it is comfortable with, while completing the development of its internal controls and processes, including research skills. It will be some time before these are in place to allow the Bank to make higher-risk equity investments. There are 44 potential future deals in the pipeline representing around £5 billion.

The Bank has not yet set a go-live date for one of its key functions to advise and support local authorities. HM Treasury said that this would be 'phased in'. The Bank is still in the early stages of developing the function, with the Bank currently working through questions such as how it will allocate its support fairly across projects, where it can add value and how it will measure its performance.

Before launching the Bank, HM Treasury's analysis of investment needs was high-level. The NAO recommends that the Bank further develops its analytical functions to understand where infrastructure needs are greatest to inform and prioritise investment decisions. The Bank can then bring this together with a clear view of what it can do best, based on its skills and performance.

HM Treasury has set high-level objectives for the Bank, and a target of earning an annual return on equity of between 2.5% and 4% by 2025-26. The Bank has translated these into performance measures covering financial returns, private investment attracted, and a positive impact on local growth and net zero. NAO has not seen the detail of how the Bank will bring this information together with other measures, such as efficiency, to assess performance of the organisation as a whole. Further, the Bank has not yet developed an evaluation strategy or framework. The Bank should ensure it has metrics and benchmarks allowing it to assess in detail whether it is balancing all of its objectives, managing potential tensions between objectives (for example, delivering strong local economic growth at the expense of environmental aims), and delivering on the government's ambition for it.

On 23 June the Bank published its first strategic plan. The government wants the Bank to be ambitious in scale and scope, and stakeholders told the NAO that they want the Bank to be innovative and to take bold risks. The Bank will need to take an appropriate risk approach allowing it to deliver on these ambitions whilst also managing risks to public money. It will need to develop and communicate a clear view of its distinct offer and engage with stakeholders in order to manage expectations.. There are things outside the Bank's control, including the current economic climate, which will affect the Bank's ability to deliver.

Gareth Davies, the head of the NAO, said:

"The UK Infrastructure Bank was set up quickly, and there is more work to do before it is fully operational and is able to support the government's aims in achieving net zero and supporting local economic growth.

"It should continue to improve how it assesses investment needs and evaluates its impact, so that it can ensure it is targeting investment where it is most needed and demonstrate it is using public money in the most effective and efficient way."

Click here for the [full report](#) and click here for the [PAC Chair's statement](#)



National Audit Office

No room for complacency

Monkeypox cases have tripled in the European Region over the past two weeks

Statement by WHO Regional Director for Europe, Dr Hans Henri P. Kluge

Today, I am intensifying my call for governments and civil society to scale up efforts in the coming weeks and months to prevent monkeypox from establishing itself across a growing geographical area. Urgent and coordinated action is imperative if we are to turn a corner in the race to reverse the ongoing spread of this disease.

The European Region remains at the centre of this expanding outbreak

Although last week the IHR Emergency Committee advised that the outbreak at this stage should be determined to not constitute a Public Health Emergency of International Concern (PHEIC), the rapid evolution and emergency nature of the event means that the Committee will revisit its position shortly. In the meantime, WHO continues to assess the risk of monkeypox in the European Region as high, given the continued



threat to public health and the rapid expansion of the disease, with continued challenges hampering our response, and with additional cases being reported among women and children.

Right now, this is the picture we are looking at: the WHO European Region represents almost 90% of all laboratory-confirmed and globally reported cases since mid-May, and since my last statement on 15 June, six new countries and areas – taking the total to 31 – have reported monkeypox cases, with new cases tripling over the same period to more than 4500 laboratory confirmed cases across the Region.

Using the latest data to get a better understanding of the disease and its spread

It's important to understand what the data from the European Region are telling us.

The WHO Regional Office for Europe (WHO/Europe) and the European Centre for Disease Prevention and Control (ECDC) are issuing weekly joint monkeypox surveillance bulletins, to summarize the situation and share a common regional analysis of this rapidly evolving situation.

Most cases reported so far have been among people between 21 and 40 years of age, and 99% have been male, with the majority of those for whom we have information being men who have sex with men. However, small numbers of cases have also now been reported among household members, heterosexual contacts, and non-sexual contacts, as well as among children. Where information is available, close to 10% of patients were reported to have been hospitalized either for treatment or for isolation purposes, and one patient has been admitted to an ICU. Fortunately, no people are reported to have died so far. The vast majority of cases have presented with a rash and about three quarters have reported systemic symptoms such as fever, fatigue, muscle pain, vomiting, diarrhoea, chills, sore throat or headache.

WHO is grateful to the 26 countries and areas who have submitted detailed information through ECDC and WHO/Europe using The European Surveillance System (TESSy). We need to continue to examine this information carefully over the next few weeks and months, to better understand exposure risks, clinical presentations in different population groups, and – most importantly – to rapidly identify any changes in the trajectory of the outbreak that would affect our public health risk assessment.

No room for complacency

So let me be clear. There is simply no room for complacency – especially right here in the European Region with its fast-moving outbreak that with every hour, day and week is extending its reach into previously unaffected areas.

At WHO/Europe, we are working with governments, our partners at the ECDC, and civil society entities – including summertime Pride and other festival and mass event organizers – to tackle the challenges before us.

Compounding the challenge is the stigmatization of men who have sex with men in several countries. Many may simply choose not to present to health authorities, fearful of possible consequences. We know from our lessons in dealing with HIV how stigma further fuels outbreaks and epidemics, but allowing our fear of creating stigma to prevent us from acting may be just as damaging.

So let me underscore once again the basics that are needed.

First, countries must quickly scale up surveillance for monkeypox, including sequencing, and obtain the capacity to diagnose and respond to the disease. Cases need to be found and investigated by a laboratory, and contacts identified promptly, so that the risk of onward spread can be reduced. WHO/Europe is working to support countries by delivering monkeypox virus tests and associated diagnostic training to 17 Member States. We have already delivered almost 3000 tests to seven Member States and shipments to others are in process.

Second, the right messages conveyed in the most understandable way must be disseminated to impacted communities and the wider public. WHO/Europe and ECDC have issued joint guidance on risk communication, mass gatherings and summer events, and a toolkit for local health authorities is being launched imminently.

Third, and not least, addressing monkeypox requires firm political commitment complemented by sound public health investments. As with any challenge, political leadership is required to support the public health response. Transparency goes hand in hand with public trust to ensure that gaps in responding to monkeypox can be swiftly addressed, and that countries partner with WHO and with each other for the collective good. The procurement and use of vaccines must apply the principles of equity and needs-based deployment. They must be undertaken in ways that generate evidence for this intervention, including the use of standard protocols evaluating vaccine effectiveness, and with systems in place to monitor the safety of these products as they are deployed in different population groups.

Monkeypox has illustrated yet again how diseases endemic to or emerging in a few countries can swiftly expand into outbreaks that impact distant regions, and indeed the entire world. This outbreak once again tests the political resolve of individual Member States and the European Region as a whole. Let us not squander this opportunity but capitalize on the experience of COVID-19 to do what is right – quickly and decisively, for the benefit of our entire Region and beyond.



World Bank Board Approves New Fund for Pandemic Prevention, Preparedness and Response (PPR)

World Bank to work together with WHO to set up Secretariat at the World Bank, with WHO as lead technical partner

The devastating human, economic, and social cost of COVID-19 has highlighted the urgent need for coordinated action to build stronger health systems and mobilize additional resources for pandemic prevention, preparedness, and response (PPR).

The World Bank's Board of Executive Directors today approved the establishment of a financial intermediary fund (FIF) that will finance critical investments to strengthen pandemic PPR capacities at national, regional, and global levels, with a focus on low- and middle-income countries. The fund will bring additional, dedicated resources for PPR, incentivize countries to increase investments, enhance coordination among partners, and serve as a platform for advocacy. The FIF will complement the financing and technical support provided by the World Bank, leverage the strong technical expertise of WHO, and engage other key organizations.

Developed with leadership from the United States, and from Italy and Indonesia as part of their G20 Presidencies, and with broad support from the G20 and beyond, over US\$1 billion in financial commitments have already been announced for the FIF, including contributions from the United States, the European Union, Indonesia, Germany, the United Kingdom, Singapore, the Gates Foundation and the Wellcome Trust.

*"I'm pleased by the broad support from our shareholders for a new Financial Intermediary Fund at the World Bank," **World Bank Group President David Malpass** said. "The World Bank is the largest provider of financing for PPR with active operations in over 100 developing countries to strengthen their health systems. The FIF will provide additional, long-term funding to complement the work of existing institutions in supporting low- and middle-income countries and regions to prepare for the next pandemic."*

*"Access to financing for pandemic prevention and preparedness is crucial. COVID-19 has exposed major gaps in preparedness capacities, which the Financial Intermediary Fund can address in a coherent manner, as part of the global architecture for health emergency preparedness and response," **said WHO Director General Dr Tedros Adhanom Ghebreyesus**. "WHO will play a central role in the FIF, providing technical leadership for its work in close collaboration with the World Bank to realize this ambitious vision."*

The goal of the FIF is to provide financing to address critical gaps in pandemic PPR to strengthen country capacity in areas such as disease surveillance, laboratory systems, health workforce, emergency communication and management, and community engagement. It can also help address gaps in strengthening regional and global capacity, for example, by supporting data sharing, regulatory harmonization, and capacity for coordinated development, procurement, distribution and deployment of countermeasures and essential medical supplies.

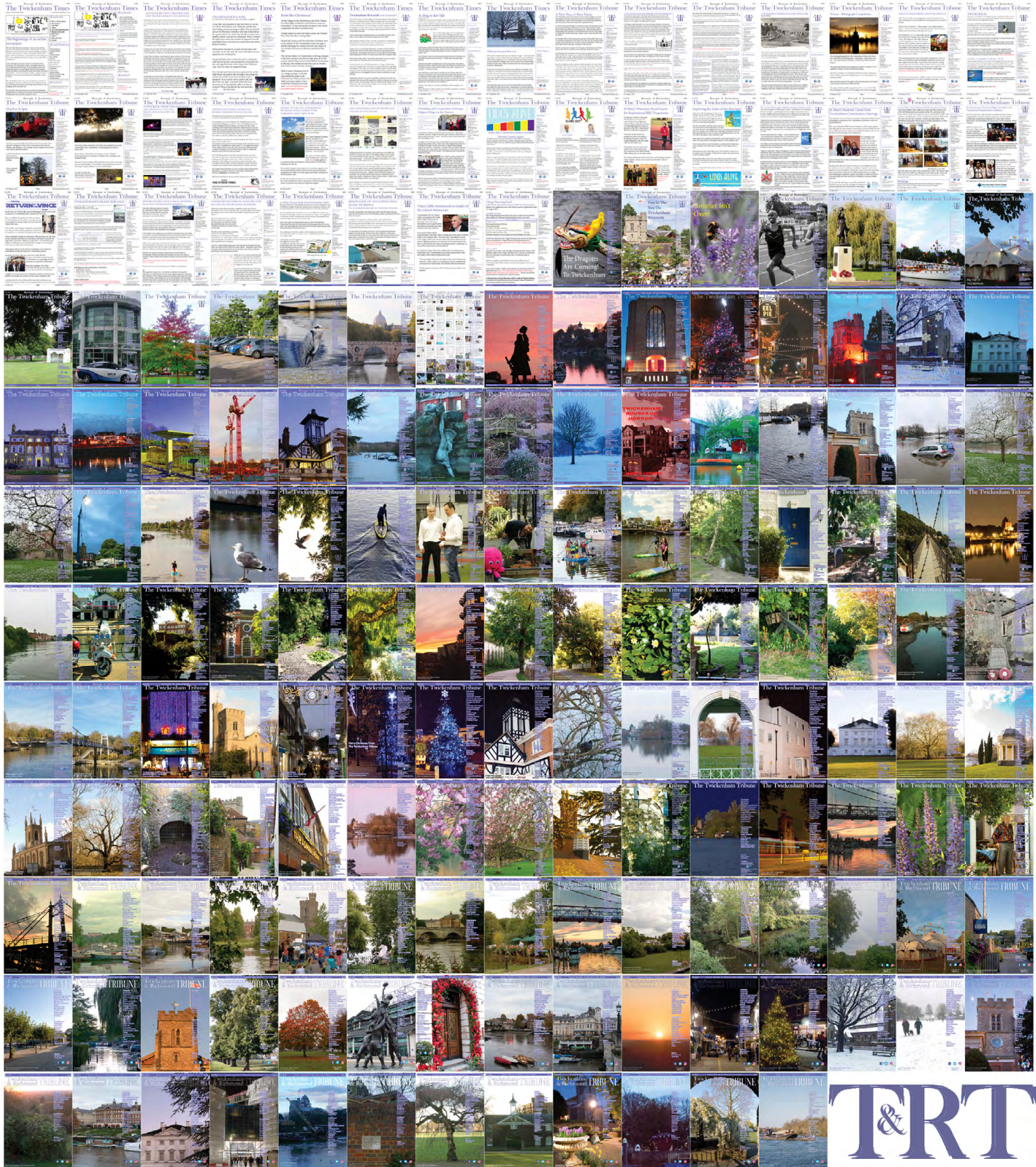
In the coming weeks, the Bank and WHO will work closely with donors and other partners to develop the detailed scope and design of the FIF. The ongoing discussions will be informed by the extensive inputs provided through [stakeholder engagement](#). The goal is to launch the FIF in fall 2022.

Drawing on its financial and legal platform, program management and operational expertise, and experience in managing FIFs, the World Bank will serve as the FIF's Trustee and host the Secretariat, which will be staffed by the Bank and WHO. Drawing on its technical expertise, the WHO will also lead on supporting and coordinating the work of the FIF's technical advisory panel. Implementing entities for FIF-financed projects in addition to the World Bank Group are expected to include WHO, other multilateral development banks and United Nations agencies, as well as other organizations. The FIF will build on the existing global health architecture for PPR, within the context of the International Health Regulations (IHR 2005) and associated monitoring mechanisms, with a central technical role for WHO.

Key principles of the FIF will be to complement the work of existing institutions that provide international financing for PPR, drawing on their comparative advantages and catalyzing funding from private, philanthropic, and bilateral sources. Further, the FIF is expected to incentivize countries to invest more in PPR, serve as an integrator of PPR efforts, and have the flexibility to work through a variety of existing institutions and adjust over time as needs and the institutional landscape evolve. The FIF's structure will combine inclusivity and agility and operate with high standards of transparency and accountability.



295 editions of the **Twickenham & Richmond Tribune** online - Lots to read: News, Reviews, History, Sports and On-going Sagas in the Borough of Richmond upon Thames



Half Page

Quarter Page
Landscape

Quarter Page Portrait

Eighth Page

Eighth Page
Landscape

Example advert sizes shown above

Thousands read The Twickenham & Richmond Tribune

If you are reading this you could be advertising your business with
The Twickenham & Richmond Tribune. Community rates are
available

Contact: advertise@TwickenhamTribune.com

View ad details at www.TwickenhamTribune.com/advertise

Contact

contact@TwickenhamTribune.com
letters@TwickenhamTribune.com
advertise@TwickenhamTribune.com



Published by:

Twickenham & Richmond Tribune (in association with World InfoZone Limited)

Registered in England & Wales

Reg No 10549345

The Twickenham Tribune is registered with the ICO under the Data Protection Act, Reg No ZA224725

©Twickenham & Richmond Tribune. All rights reserved. No part of this publication may be used or reproduced without the permission of Twickenham & Richmond Tribune. While we take reasonable efforts, this online newspaper cannot be held responsible for the accuracy or reliability of information. The views and opinions in these pages do not necessarily represent those of The Twickenham & Richmond Tribune.

[Terms & Conditions](#)